
INVESTMENT PROJECT

HIGH-TECH SOYBEAN PROCESSING FACTORY

Deep Processing & Soy Protein Isolate Production

Giurgiu Free Trade Zone, Romania

A strategic investment in European food security, powered by patented technology and a world-class international partnership.

ISCO DSM PECTIN GROUP S.R.L. | In partnership with Solbar Protein

April 2026

INVESTMENT OVERVIEW

Four pillars of a transformative investment opportunity

01



PROJECT VISION

Goals, market opportunity, and strategic objectives for establishing Europe's premier soy protein production hub.

02



STRATEGIC LOCATION

Giurgiu site advantages, exclusive aerial photography, and multimodal logistics connecting river, rail, and road.

03



TECHNOLOGY & PRODUCTS

Patented modern processing technology and a diversified product portfolio across across multiple market segments.

04



INVESTMENT IMPACT

Economic benefits, job creation, environmental sustainability, and the future outlook outlook for stakeholders.

01

SECTION ONE

PROJECT VISION

Building Europe's Premier Soy Protein Production Hub

A European-Scale Industrial Complex

180,000

TONNES SOYBEANS / YEAR

90%+

PROTEIN CONTENT IN SPI

165,673

SQ.M SITE AREA



EPC CONTRACT MODEL

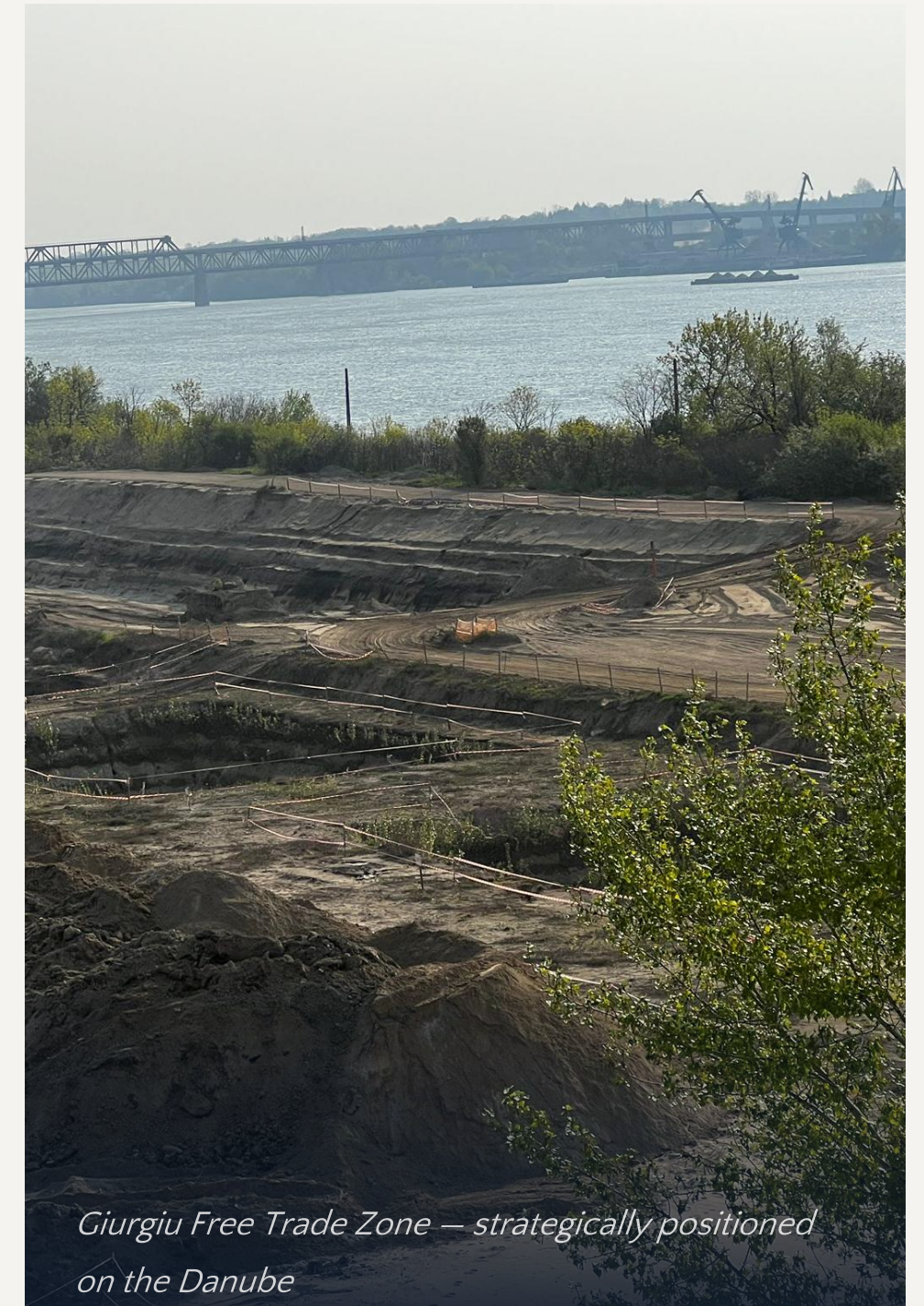
International consortium, integrated risk management

Project Scope. A European-level industrial facility for deep soybean processing, producing Soy Protein Soy Protein Isolate (SPI) and high-value products. **180,000 tonnes/year** capacity.

Technology Partnership. Strategic cooperation with **Solbar Protein**, bringing international expertise in soy protein production.

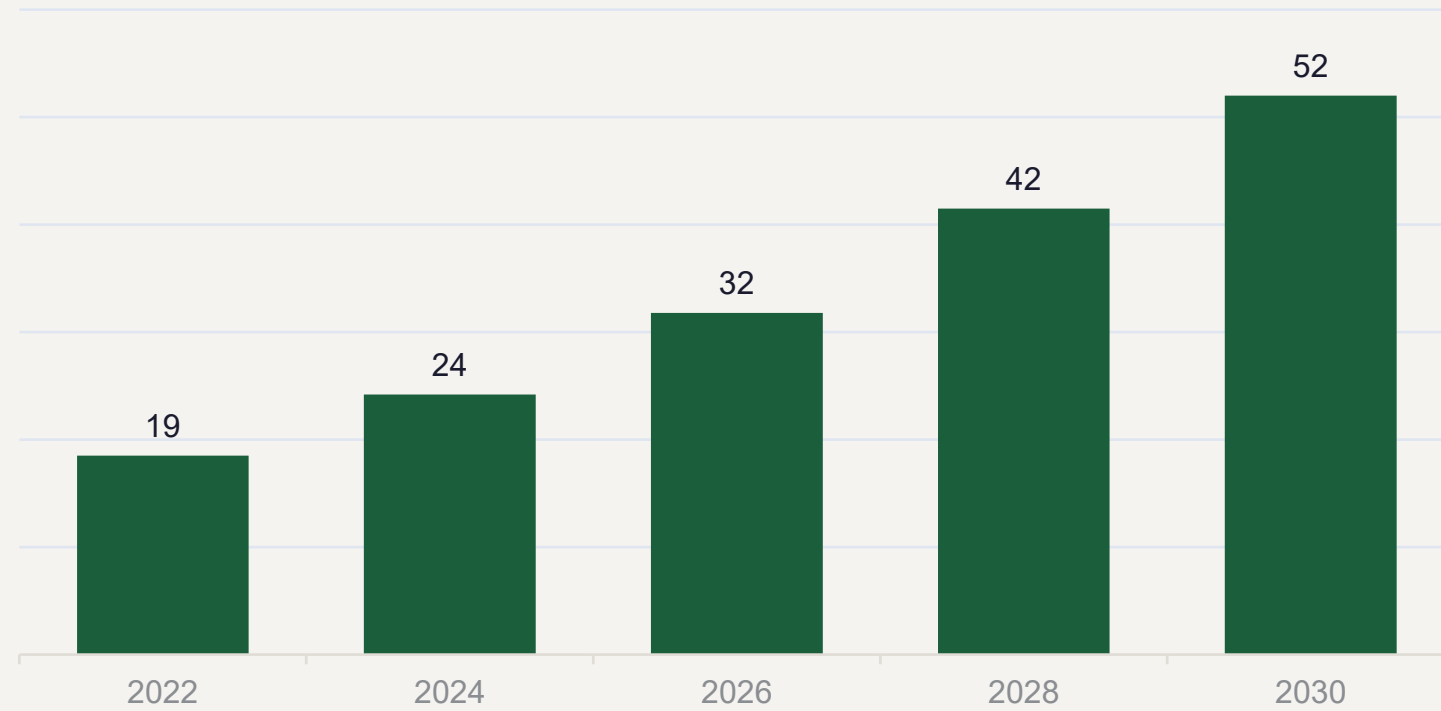
Market Positioning. Export-oriented complex targeting the global plant protein market with Food Grade and Non-GMO certified ingredients.

Location Advantage. Giurgiu Free Trade Zone on the Danube — customs exemptions, tax incentives, and direct EU market access.



Giurgiu Free Trade Zone — strategically positioned on the Danube

Global Plant Protein Demand Creates a Massive Market



\$52B

PROJECTED GLOBAL PLANT PROTEIN MARKET BY 2030

12%+

ESTIMATED ANNUAL GROWTH RATE

40%+

EU IMPORT DEPENDENCY FOR SOY PROTEIN

Key Market Drivers

- Functional foods expansion and health-conscious demand
- EU policy support for sustainable protein production

Soy Protein Isolate (SPI)

Our flagship product — a highly purified protein with **minimum 90% protein content**. Exceptional solubility, emulsification, and texture-enhancing properties for diverse food applications.

Applications: Meat processing, plant-based alternatives, nutritional supplements, bakery, dairy alternatives, infant nutrition



Meat Industry



Bakery & Dairy



Plant-Based Foods



Infant Nutrition



Nutrition



Aquaculture

02

SECTION TWO

STRATEGIC LOCATION

Giurgiu Free Trade Zone — Where the Danube Meets Opportunity

165,673 m² Production Site on the Danube River

Cadastral No. 41320 | Documented: 176,389 m² | Measured: 165,673 m²



Panoramic view of the Danube River from the project site



Site access roads and infrastructure development



Earthworks and site preparation for the production complex



Construction equipment mobilized on site

Multimodal Logistics Hub: River, Rail, Road & Sea



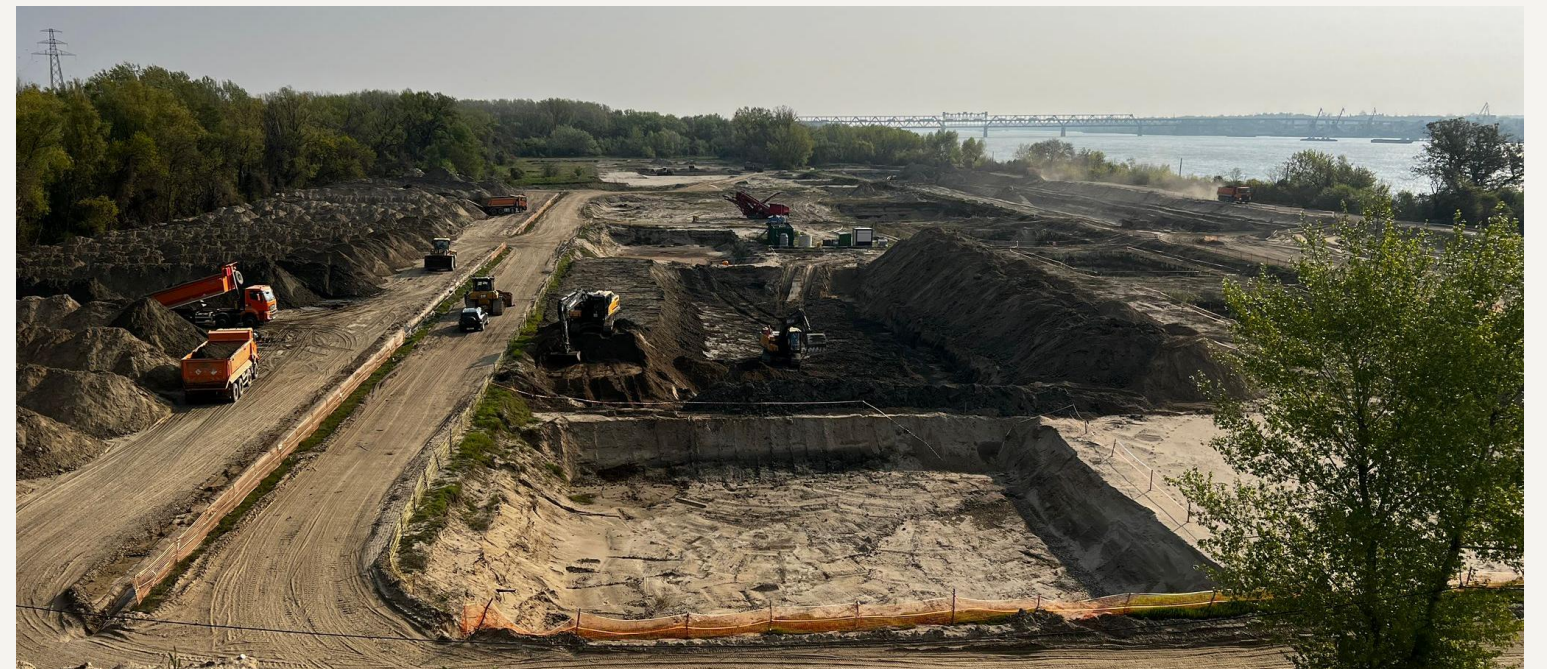
Aerial overview of the extensive site with Danube access



The Friendship Bridge — cross-border Romania-Bulgaria access



Heavy excavation preparing foundations for industrial structures



Panoramic view showing the full scale of development

03

SECTION THREE

TECHNOLOGY & PRODUCTS

Patented Modern Technology, World-Class Partnership

Patented Technologies: 90%+ Protein Isolate Efficiency



180,000 tonnes/year capacity | Patented extraction technology | Multi-product output | Export to EU, Middle East & Asia

Technology Platform Advantages

High Extraction Efficiency — Patented processes maximize valuable component component recovery

Consistent Quality — Automated systems ensure uniform specifications

International Standards — Food Grade and Non-GMO compliance

Multi-Product Output — SPI, concentrates, fibers, oil, isoflavones

Scalable Design — Infrastructure supports future expansion

SPI Product Specifications

- ✓ **Protein Content:** Minimum 90% on dry basis
- ✓ **Solubility:** Excellent dispersibility in water-based systems
- ✓ **Emulsifying Properties:** Superior fat-binding and texture enhancement
- ✓ **Water Binding:** High capacity for moisture retention
- ✓ **Certifications:** Food Grade, Non-GMO, EU compliance ready

Diversified Portfolio Across Multiple Market Segments



FLAGSHIP PRODUCT

Soy Protein Isolate

90%+ protein content. The core of our production model. Used in meat, plant-based foods, nutrition, and bakery.



Protein Concentrates

High-protein ingredients for functional food applications



Textured Proteins

Meat alternatives and plant-based food formulations



Dietary Fibers

Nutritional enrichment for functional foods and supplements



Non-GMO Soybean Oil

Food-grade and industrial oil applications



ADDITIONAL REVENUE STREAM

High-Protein Aquaculture Feed

By-product utilization maximizes raw material efficiency and creates a sustainable secondary income stream.

100%

RAW MATERIAL UTILIZATION

Strategic Advantage: This diversified portfolio allows the complex to operate across multiple market segments simultaneously — **meat processing, plant-based foods, nutritional based foods, nutritional supplements, bakery, aquaculture, and nutraceuticals.** By-product valorization through aquaculture feed production ensures near-zero waste and near-zero waste and maximizes the total added value of every tonne of soybeans processed.

04

SECTION FOUR

INVESTMENT IMPACT

Economic Growth, Job Creation & Sustainable Development

Significant Investment Driving Regional Transformation

€150-200M

TOTAL INVESTMENT VALUE

300-400

DIRECT JOBS CREATED

500-700

INDIRECT JOBS

180,000t

ANNUAL CAPACITY

Economic Impact Highlights

Export Revenue — Production for EU, Middle East, and Asia creates a major Romanian export stream

Regional Hub — Center of excellence attracting suppliers and related businesses to Giurgiu

Technology Transfer — World-class soy processing expertise via Solbar Protein partnership

Agricultural Development — Stable Non-GMO soybean demand supports local farmers

Project Implementation



EPC Contract Model — International consortium delivers design, construction, and commissioning



Solbar Protein Partnership — Technology licensing and expertise from a global industry leader



Phased Implementation — Structured rollout from site prep to production with clear milestones



Risk Mitigation — EPC model, proven technology, and FTZ status reduce risk

Environmental Responsibility in Every Process Stage



Wastewater Treatment

Advanced purification systems ensure all process water meets EU discharge standards. Water recycling loops minimize freshwater consumption.



Air Quality Management

Comprehensive dust control and filtration systems protect workers and the environment. Continuous air quality monitoring ensures compliance.



Energy Efficiency

Energy-efficient equipment and heat recovery systems minimize carbon footprint. Green building design with natural lighting and insulation.



Zero-Waste By-Product Use

Processing by-products converted to high-protein aquaculture feed. Near-zero waste operation maximizes resource efficiency.



Sustainable Sourcing

Certified Non-GMO soybeans from traceable supply chains. Support for sustainable agricultural practices in sourcing regions.



EU Compliance

Full compliance with EU environmental directives. Targeting ISO 14001 certification for environmental management systems.

INVESTMENT OPPORTUNITY

FROM THE DANUBE TO GLOBAL MARKETS

A world-class soy protein production hub in the European Union.

Strategic location. Patented technology. Strong partnerships. A rapidly growing market.

CONTACT US

ISCO DSM PECTIN GROUP S.R.L.

www.iscodsmpectin.com

Office@iscodsmpectin.com

+40 724 442 160

European Representative Office, Romania

Bahadyr Nabatov, General Manager — International Project Development

TR: +90 551 075 84 74 | RO: +40 724 231 010